

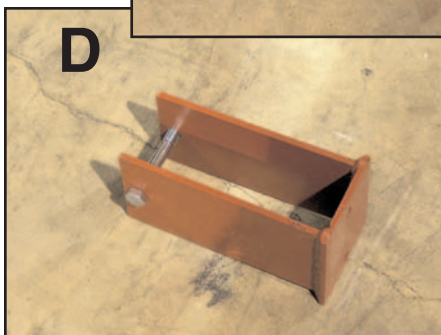
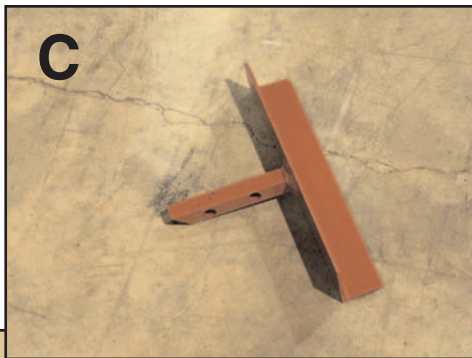
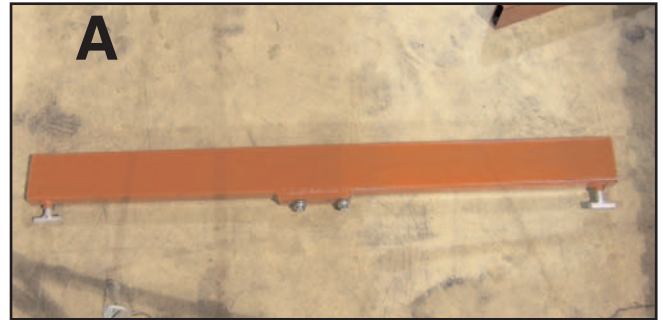
# 4053- Body Bed & Cab Lifter

Made In USA

**CHAMP**  
Frame Straightening Equipment Inc.

## Parts List

- A** 1 - Support Beam
- B** 2 - Support Arm Bracket
- C** 2 - Support Arm
- D** 1 - Support Beam Mount
- E** 2 - Locking Pin

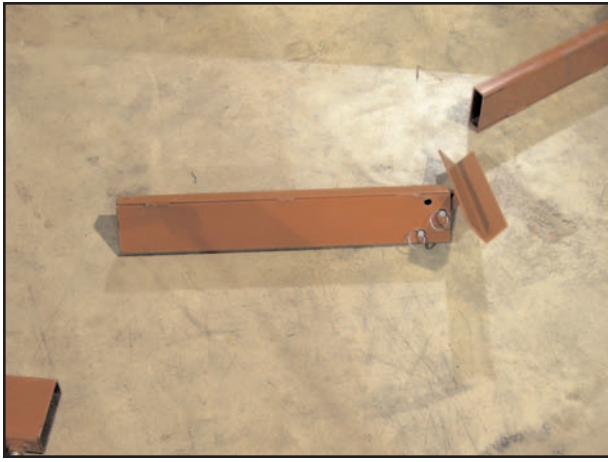


### WARNING

Read all assembly instructions completely before attempting to assemble unit. Improper assembly could result in damage to vehicle or injury to user. As with all machinery and repair equipment, use caution when loading vehicle. Body Bed & Cab Lifter should be inspected regularly for damage. Do not use if any cracks in metal or welds are present.

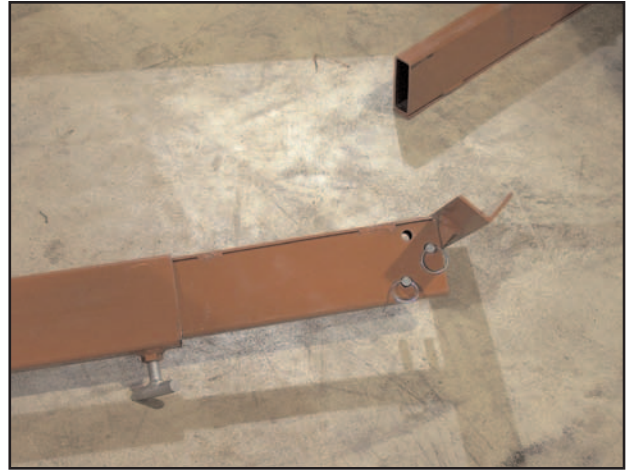
**Auto Body Toolmart**  
**Champ Frame Straightening Equipment, Inc.**  
2545 Millennium Dr., Elgin IL, 60124  
800-382-1200 [www.autobodytoolmart.com](http://www.autobodytoolmart.com)

1.



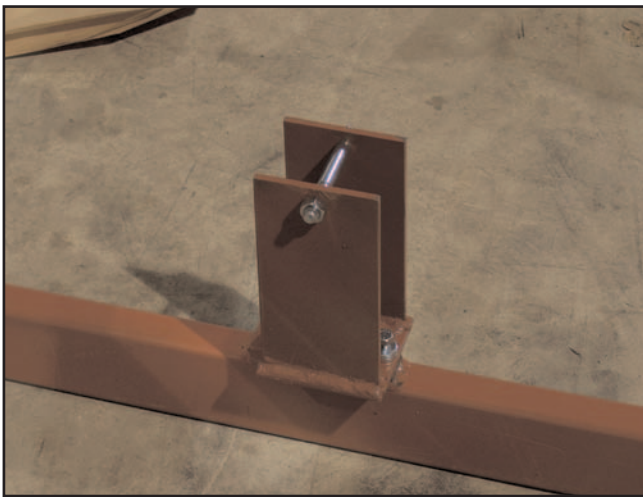
Insert Support Arm into Support Arm Bracket. Lock into place with two locking pins. Repeat for other Support Arm & Support Arm Bracket

2.



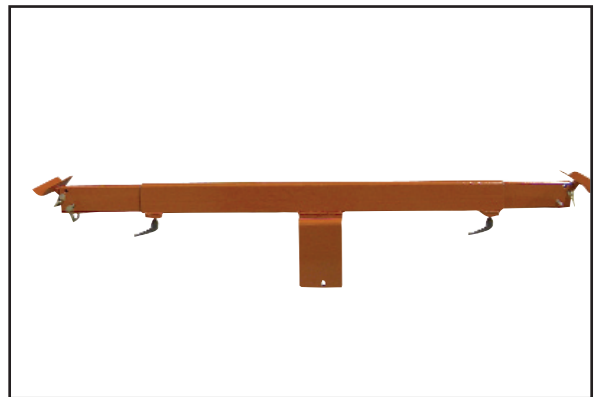
Insert assembled Support Arm Beam & Support Arm into Support Beam. Support Arm should be facing up with Locking Knob facing down for lifting Cabs & Bodies. Reverse for lifting truck beds

3.



Attach Support Beam Mount to Support Beam with supplied bolts. Tighten securely.

4.



Your assembled Body Bed & Cab lifter is now ready to mount to your Engine Hoist. (Engine Hoist is not included with the Body Bed & Cab Lifter)

5.



Body Bed & Cab Lifter is mounted to your engine hoist with supplied bolt. Tighten securely.

