



Model:

3018

Product Type:

DIGITAL TIRE INFLATOR



WARNING



Study, understand and follow all instructions provided with this product. Read these instructions carefully before installing, operating, servicing or repairing this tool. Keep these instructions in a safe accessible place.

INTENDED USE OF THE TOOL

Unit designed to inflate, deflate and measure tire pressure. Do not use this tool outside of the designed intent. Never modify the tool for any other purpose or use.



WARNING



Caution: To help prevent personal injury

Use of this product can expose you to chemicals including ethylene glycol, gasoline vapors and engine exhaust, which are known to the State of California to cause cancer, birth defects, or reproductive harm. For more information, visit www.P65Warnings.ca.gov. Always wear ANSI approved safety equipment, safety glasses and clothing when using this product. Study, understand, and follow all instructions provided with this product. Failure to read and follow all warnings and operating instructions may result in damages and serious injury or death.

- Always wear ANSI approved goggles when using this product. (Users and Bystanders).
- Never use this tool for any application other than for which it was designed.
- Only use accessories designed for this tool.
- Never alter or modify this tool in any way.
- Improper operation and/or maintenance of the tool, modification of the tool, or use of the tool with accessories not designed for it could result in serious injury or death.
- Always select the correct accessories of the correct size and design for the job that you are attempting to perform.
- Always work in a clean, safe, well-lit, organized and adequately equipped area.
- Do not begin repairs without assurance that vehicle is in secure position, and will not move during repair.

DIGITAL TIRE INFLATOR



MADE IN CHINA

DO NOT DISCARD – GIVE TO USER



Astro Pneumatic Tool Company

www.astrotools.com

1 YEAR LIMITED WARRANTY

- Astro Pneumatic Tool Co. warrants our products to the original user against defective material or workmanship for a period of 1 year (except where noted on our price schedule) from the date of 1st use. Astro reserves the right to determine whether the product failed because of defective material, workmanship or other causes and to charge back for missing parts. Astro Pneumatic Tool Co., at its discretion, will repair products covered under this warranty free of charge. The distributor should direct the original user to return the product (with the exceptions listed below) with the distributor's name, address, adequate proof of date of purchase or a copy of warranty card, and a short note explaining the problem. Failures caused by accident, alteration, or misuse are not covered by this warranty.
- If one part of this product fails, please do not return the entire product. Astro will replace free of charge component parts of this product that fail within 1 year of first use by the original user. Items included in this category include but are not limited to kits, hand tool kits and any other product where there are multiple items or components that make up the unit. Please contact the phone number below in order to obtain the replacement components covered under warranty.
- Astro Pneumatic Tool Co. or its authorized service representatives must perform all warranty repairs. Any repair to the product by unauthorized service representatives voids this warranty. The rights under this warranty are limited to the original user and may not be transferred to subsequent owners.
- This warranty is in lieu of all other warranties, expressed or implied, including warranties of merchantability and fitness for a particular purpose. Some states do not allow the exclusion of limitations of incidental or consequential damages so the above limitations may not apply to you.



**PLEASE DO NOT RETURN ANY PRODUCT WITHOUT CALLING
1-800-221-9705 FOR INSTRUCTIONS**



BEFORE USE

When unpacking, check the parts diagram and part number listing on page 4 to make sure all parts are included. If any parts are missing or damaged, please call your distributor.

PRODUCT INFORMATION:

- AAA battery powered design. 4X the battery life and simplified battery installation.
- 21" Stainless braided hose with bend guard for increased durability
- Maximum accuracy and 0.1psi resolution for use with TPMS (Tire Pressure Monitoring System)
- Displays KGF, PSI or BAR measurement
- Large face backlit LCD digital read-out
- Unit covered with rubber sleeve for extra comfort and durability
- Two position lever. 1st position deflates, 2nd position inflates.
- Easy Change Chuck System
- Works on with nitrogen systems and CO₂

FUNCTION KEY:

ON/UNIT/LIGHT: Press once to turn on. Press again to turn on backlight. When the unit is on, press for 3 seconds to switch units. If display is unreadable or will not change, press and hold the button for 8 seconds to restart.

TWIST/THREAD CHUCK ONTO VALVE STEM TO FULLY SEAL

Specifications:

Measuring Range:	3 - 175psi
Units:	PSI / BAR / KPA / KGF
Resolution:	0.1 PSI
Accuracy:	Compliance with European 86/217/EEC and ANSI B40.1
	0 - 58 psi +/- 1.2 psi
	59 - 174 psi +/- 2.0 psi
Working Temperature:	32°F - 104°F (=0°C - 40°C)
Power:	AAA Battery
Battery Lifetime:	560hr



Model:

3018

Product Type:

DIGITAL TIRE INFLATOR

OPERATING INSTRUCTION

1. Remove tire valve cap.
2. With clip-on air chuck lever depressed, firmly press chuck onto tire valve stem and release lever, and ensure that no air leaks.
3. Press the grip to inflate. Press the grip half-way to deflate.
4. To turn on the inflator, press the ON/UNIT/LIGHT button. If it does not work, the inflator will be turned off automatically 90 seconds later.
5. When the inflator is on, press the ON/UNIT/LIGHT button to turn on the backlight in order to read the pressure in dark. The backlight will diminish automatically in 10 seconds. Backlight will not be activated by turning on the inflator, can only be activated by pressing the ON/UNIT/LIGHT button.
6. To change unit, when the inflator is on, press ON/UNIT/LIGHT button for at least 3 seconds. Then, press ON/UNIT/LIGHT button shortly after to choose the desired unit. The unit chosen will be set as default for following usage.
7. The inflator's battery is 2*AAA, if voltage is low, the low battery signal on the top left of the LCD display will be flashing continuously to remind user to change the battery.
8. The measuring range is 0.2 - 12 bar (3 - 175psi). Reading resolution is 0.01 bar (0.1psi). Maximum inlet pressure is 15 bar (218psi).

USAGE NOTES:

- Inflator's working pressure is 0.2 - 12bar (3 - 175psi), Max Inlet Pressure is 15bar (218psi).
 - If the pressure is between 7bar and 17 bar, the actual value will still be shown on the LCD, but the Maximum Permit table Error +/- 3psi is not guaranteed.
 - Maximum Pressure is above 17bar, the LCD will show "----", no actual value, and the inflator may be damaged.
- Accuracy is as below according to European Community Council Directive 86/217/EEC
- 0 - 58 psi +/- 1.2 psi
 - 59 - 174 psi +/- 2.0 psi

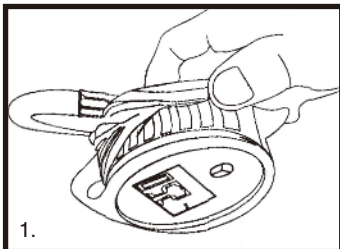


IMPORTANT



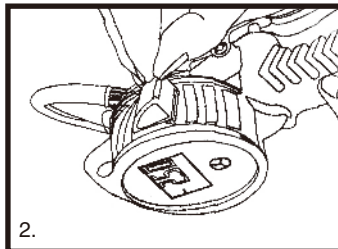
To avoid the risk of personal injury, especially to the eyes, face or skin,
DO NOT direct the stream at any person.

BATTERY INSTALLATION INSTRUCTION



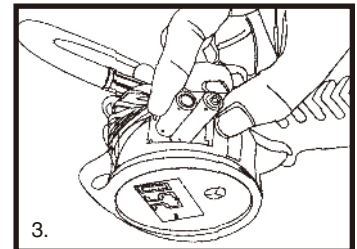
1.

Peel back rubber sleeve



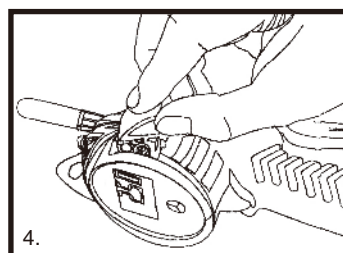
2.

Pry the cover open with fingernail or flathead screwdriver (care to hold down cover, as cover is under spring tension.)



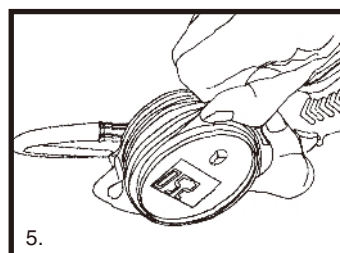
3.

Install 2 AAA batteries in indicated orientation



4.

Snap battery cover shut



5.

Reinstall rubber sleeve



Model:

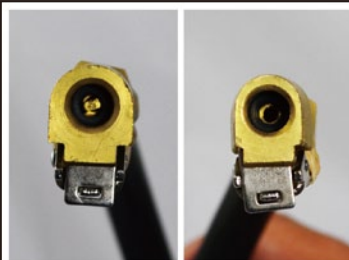
3018

Product Type:

DIGITAL TIRE INFLATOR

TROUBLESHOOTING GUIDE

ISSUE	RECOMMENDATION	REPLACEMENT PART
Light is dim or not coming on	Replace unit battery. Unit uses AAA battery. (See Product Manual for instructions on how to change battery)	AAA batteries
Inaccurate Reading (Example: Reading is off by 3psi to 4psi)	Hold power button for 8 seconds to clear. Or replace unit battery. Unit uses AAA battery. (See Product Manual for instructions on how to change battery)	AAA batteries
Unit doesn't turn on	Replace unit battery. Unit uses AAA battery. (See Product Manual for instructions on how to change battery)	AAA batteries
Unit is not deflating	1) Examine the Air Chuck (3018-17) to see if pin is broken. (see Image 1 below)	# 3018-17
	2) If pin is broken order part # 3018-17 - Air Chuck	
	3) To begin repair unscrew broken chuck from hose and replace with new chuck.	
Air Leak (Valve Assembly)	1) Air leaks are usually caused by worn o-rings in the Valve Assembly.	n/a (P4 O-ring)
	2) To begin repair simply remove Circlip (3018-09) and Lever Pin (3018-13) to gain access to the Valve Assembly. Unscrew Valve Base Assembly (3018-12) and pull out Valve Assembly.	
	3) Replace o-rings on valve assembly with P4 O-ring. Check Spring (3018-10) and ensure Spring is not broken or damaged	
	4) Replace Valve Assembly onto unit and tighten Valve Base Assembly (3018-12). Replace Lever Pin (3018-13) and Circlip (3018-09)	
No Handle Spring Action	1) No handle spring action is usually caused by broken spring	# 3018-10
	2) Order part # 3018-10 - Spring	
	3) To repair simply remove Circlip (3018-09) and Lever Pin (3018-13) to gain access to the Valve Assembly. Unscrew Valve Base Assembly (3018-12) and pull out Valve Assembly	
	4) Replace broken Spring (3018-10)	
	5) Replace Valve Assembly onto unit and tighten Valve Base Assembly (3018-12). Replace Lever Pin (3018-13) and Circlip (3018-09)	



GOOD

DAMAGED



GOOD

DAMAGED

IMAGE 1



**Astro Pneumatic
Tool Company**

372 Old US Highway 52 South
Mount Airy, NC 27030

Model:

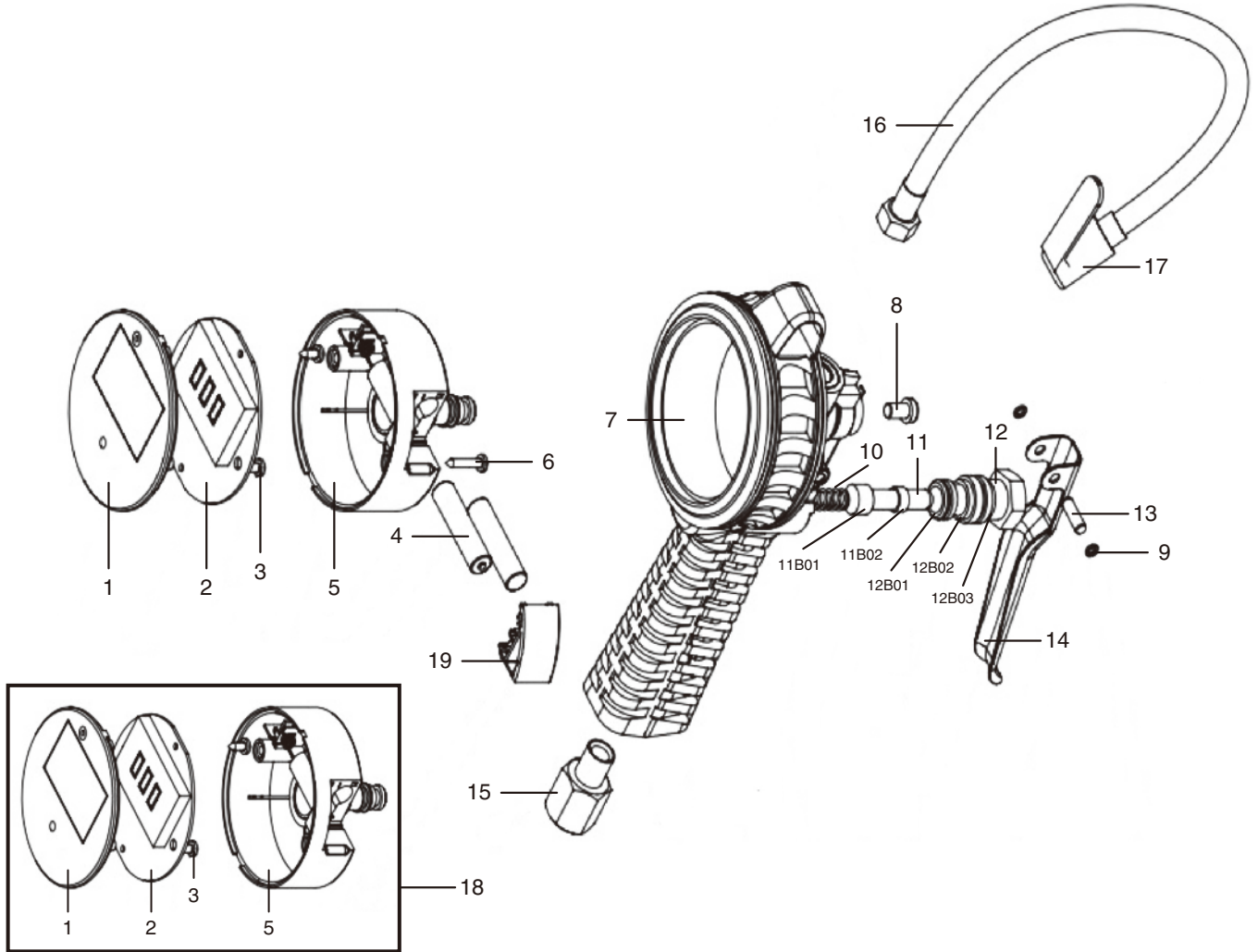
3018

Product Type:

DIGITAL TIRE INFLATOR

Call 1.800.221.9705 for questions concerning performance of the product or other inquiries.

PARTS BREAKDOWN



Parts List

Index No.	Part No.	Description	Qty
1	3018-01*	Front Cover	1
2	3018-02*	PCB Board Assembly	1
3	3018-03	Ø 2.6 x 6.0 Screw	2
4	3018-04	AAA Battery	2
5	3018-05*	Sensor Valve Assembly	1
6	3018-06	Ø 3.5 x 14 Screw	2
7	3018-07	Main Body	1
8	3018-08	Hex Screw Ø 3.5 x 8	1
9	3018-09	Circlip Ø 3.5	2
10	3018-10	Spring 0.85 x 7.0 / 8.0 x 18.5 x 7	1
11	3018-11	Valve Assembly	1
11B01	3018-11B01	O-Ring	1
11B02	3018-11B02	O-Ring	1

Items marked with an (*) are not sold individually

Index No.	Part No.	Description	Qty
12	3018-12	Valve Base Assembly	1
12B01	3018-12B01	O-Ring	1
12B02	3018-12B02	O-Ring	1
12B03	3018-12B03	O-Ring	1
13	3018-13	Lever Pin	1
14	3018-14	Lever	1
15	3018-15	Air Inlet	1
16	3018-16S	Stainless Hose Assembly	1
17	3018-17	Air Chuck	1
18	3018-18	Digital Gauge Assembly	1
19	3018-19	Battery Cover	1
	3018-VSA	Air Valve Rebuild Kit (includes part numbers 11, 11B01, 11B02, 12, 12B01, 12B02, and 12B03.)	
	3018HSS	Stainless Hose with Air Chuck	